

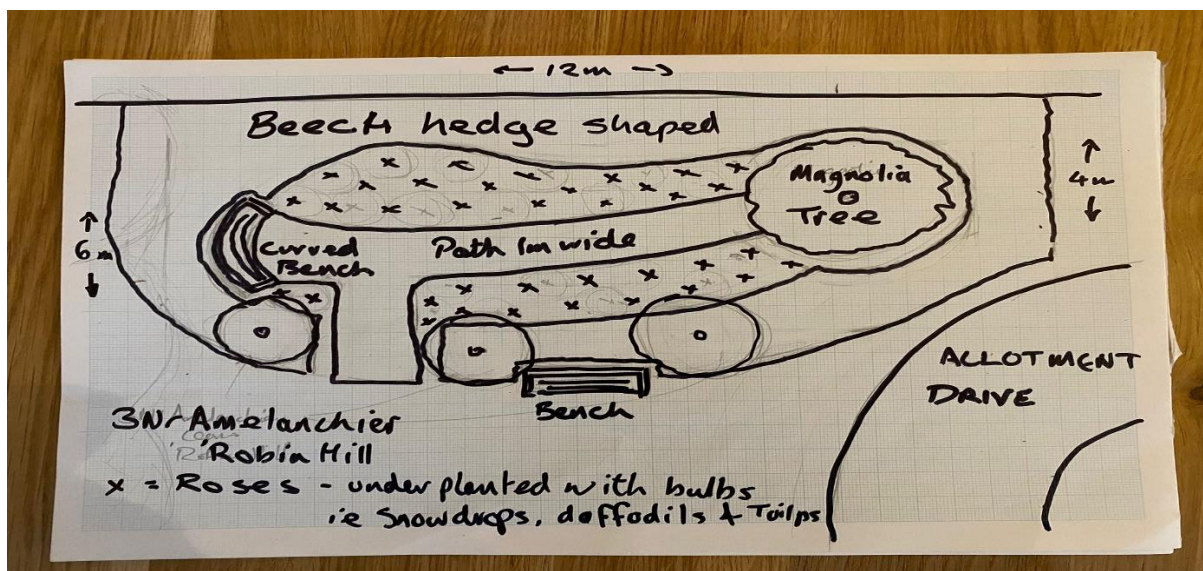
### Love Lane Cemetery Extension Update

The following works have been completed

- Preparation and levelling of the ground.
- Removal of existing fence.
- Installation of new path.
- Installation of fencing and gates.
- Tree work to remove overhanging branches.

### Cremated Remains

It is an aspiration of the Town Council to provide space in the extension area to enable the interment of cremated remains. In order to facilitate this aspiration two sketch designs of what the area could look like have been produced.





These sketches that have been created are designs for a memorial garden and in a larger space the sketches would be possible to implement. However, space is of a premium in Love Lane Cemetery and it is important to maximise space for future interments. Therefore, it may be advisable to opt for a simpler design for the cremated remains area with some planting in the areas where it will not be possible to use for interments.

Two simple designs that would work in the extension area and could be considered are as follows

**Hengoed Cemetery** - cremated remains area is to be set out in 4 rows in gravel area and in time extended into the grassed area.



**Newport Example** - cremated remains are interred in gravel in single rows bordered by decorative sets. Additional lines can be added in future when needed.



**Decision needed** - Whether to progress with the creation of a cremated remains area, and if so to agree the process.